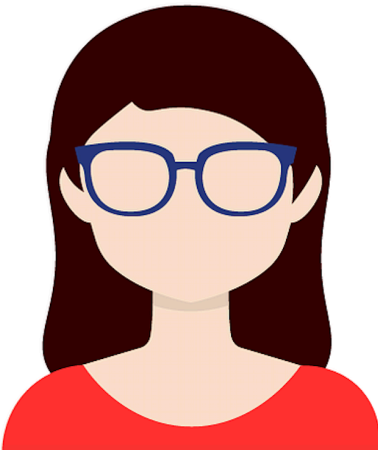


ED

EBBA DANIELSSON

GEOGRAPHIC INFORMATION OFFICER
BENEFICIARY | GOVERNMENTAL AGENCY



BRIEF PERSONA DESCRIPTION

Ebba is a geographic information officer in a governmental agency. She is responsible for the acquisition, management and dissemination of spatial data required for her organization to perform its function. Her role is of an executive nature and directly enables the agency's domain-specific operations. She often needs to make strategic decisions in relation to the three responsibilities mentioned earlier.

Ebba's decisions regarding GIS technologies are directly driven by her agency's needs. Her interest in space data grew when current surveying technologies impose limitations to their operations.

SKILLS

Technical background in remote sensing

Advanced GIS user, including data management & administration

ArcGIS, QGIS

USE CASE NEEDS

Ebba has detailed knowledge about applied use cases for space data. They have clear questions, data sets and ways to evaluate it in mind. In case compromise is required, wider spatial coverage is prioritized over longer temporal coverage. Detailed features (i.e. what is being measured) are also prioritized over longer temporal coverage, as long as specific change is detectable.

The motivation for her use cases is largely driven by enforcing regulations, complying with the law and enabling data-driven policies. Ebba anticipates benefits from SDL in terms of feasible wider spatial coverage and better SLAs (i.e. data availability).

To achieve these benefits, close collaboration and service from SDL is required. She is very motivated for such collaboration but will require (partial) external funding to help her realize those use cases. Ebba perceives SDL's data products as its most valuable aspect.

DATA SOURCES

The agency currently sources both vector and raster such as:

- LiDAR
- Aerial photography
- Satellite imagery
- DEMs
- Land surveying
- Vector data & models from other agencies (e.g. EPA)

ANALYSES

Ebba does not currently conduct analyses herself but prepares and manages spatial data for other users. She prepares it to be analyzed via:

- GIS systems (e.g. overlays)
- Raster functions

ORGANIZATION AND SDL

Ebba's organization operates all over Sweden. They are currently generating their own data from surveying, land measurements and area photography. The data is shared with county administrative boards and municipalities.

They have also started using satellite data for some time now, but are facing tremendous challenges regarding data quality, accuracy and availability.

GOALS

- Prepare data products for executive partners faster and with higher quality
- Enforce regulations in a more cost-efficient manner
- Activate data-driven policy making across their organization

EBBA SAYS...

“We have the pressure to manage a lot of [natural and financial] resources that depend on geographic data. It is very costly to do extensive manual surveying. And the European Commission is pushing for us to conduct area monitoring using Sentinel data. But it is also difficult to work with this data. We need an automated way of obtaining and using it... and also develop a decision support system that can help [our operations]. We were hoping that the Space Data Lab will solve these problems for us. That's why we became very interested in taking part in this” (Interviewee E)